

## Product description & dimensions



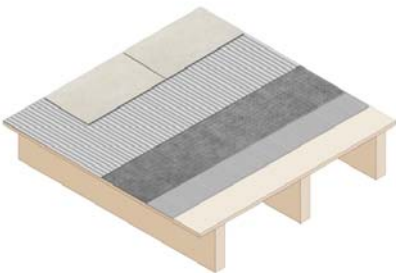
- Polyethylene membrane with heat-bonded bonding fleece affixed to top and bottom, for exceptional mechanical thinset adhesion
- Meets TTMAC standards (311F-D) for uncoupling membranes over concrete and for single-layer plywood at 19.2" O.C. joist spacing (313F-D)
- 3mm (1/8") thick x 1m x 30m roll (3.28' x 98.5') = 30sq/m (323sq/ft) per roll

## General product limitations & requirements



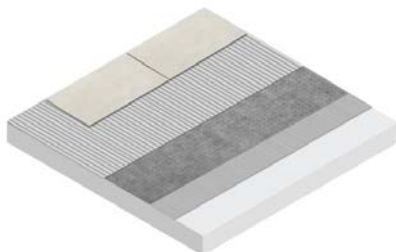
- Interior Use only
- For Porcelain and Ceramic tile only, with dimensions of:
  - minimum thickness of 8mm or greater
  - facial dimension minimum 8"x8" but not larger than 24" x 48"
- Recommended and tested with Kiesel Servoflex Trio thinset, can also be used with ANSI A118.15 or ANSI A118.4 thinsets
- All installations, materials and structures must comply with local, provincial or federal building codes
- Uncoupling products do not replace the need for expansion & movement joints

## Substrate requirements on plywood/OSB subfloor



- T/G Plywood or T/G OSB subfloor, with dimensions of:
  - 5/8" thickness or greater, fastened to 16" on center joists
  - 3/4" thickness or greater, fastened to 19.2 on center joists
- Joist system must be engineered to meet a minimum deflection of L/360 with the weight of the finished tile
- Subfloor must be structurally sound, clean, dry, free from contaminants, waxes, oils, epoxies, urethanes, paints, coatings and or other floorings

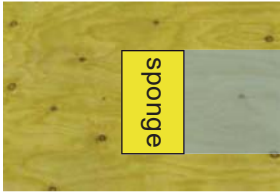
## Substrate requirements on concrete slab



- Concrete must have a non-polished surface, ie textured finish (fine broomed, shot blasted)
- Lightweight concrete and gypsum toppings must have a 2000psi min compressive strength, with less than 2% residual moisture and may require priming (consult thinset manufacturer).
- Concrete must be structurally sound (ie no crumbling, large cracks, movement), clean, dry, free from contaminants, waxes, oils, epoxies, urethanes, paints, coatings and or other floorings
- Slab cracks greater than 3mm in width must be treated according to TCNA F125A

# Installation Instructions

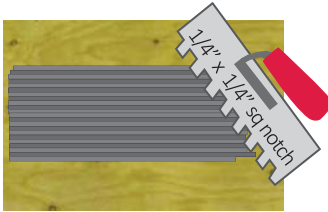
## 1. Apply thinset Primer to substrate



Sweep and vacuum the floor to remove any dust.

Using clean water and a sponge, wipe the floor, to remove any remaining dust.

## 2. Apply thin-set mortar



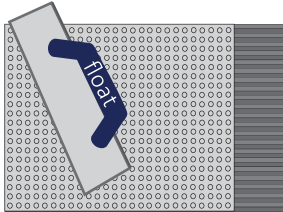
As the fleece of the überMAT will absorb water from thinset, it is advised to mix the thinset the wettest allowed by the thinset manufacturer's instructions, to allow better workability and thinset transfer to the überMAT fleece.

When spread, the thinset must hold its notch profile.

Using a 6mm x 6mm (1/4" x 1/4") square notch trowel, use the flatside of the trowel, to key the thinset onto the subfloor. Then using the notched side of the trowel, spread thinset onto the subfloor in a uniform direction.

If a skin forms over the thinset before the überMAT is installed, you must remove the thinset and re-apply fresh thinset.

## 3. Embed membrane firmly



Unroll überMAT into the fresh thinset, with the circular indentations of the überMAT facing UP.

Then embed the überMAT into the fresh thinset, by using either:

- A grout float, firmly pressed with body weight across the top of überMAT
- A 50 - 75lbs weighted roller

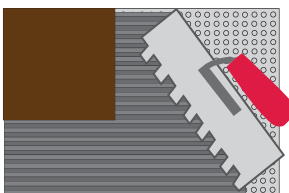
Verify the transfer of thinset to the underside of the überMAT immediately (do not wait or you will break the thinset adhesion), by lifting a corner of the überMAT and checking the amount of thinset which has transferred to the underside of the fleece.

If the thinset transfer is not sufficient, verify that:

- You are using the correct trowel notch
- The thinset is not mixed too "dry" or has not skinned over
- Not enough weight is being used to press the überMAT into the thinset

Once the thinset transfer is sufficient, continue to lay the überMAT back into the still fresh thinset, and continue installing.

## 4. Apply thin-set mortar & Install tiles.



It is advisable to allow the thinset 12 hours of cure time before light traffic or installing tiles.

Install tiles per TTMAC and thinset manufacturer's guidelines.

As the fleece of the überMAT will absorb water from thinset, it is advised that the thinset is mixed to the wettest allowed by the thinset manufacturer's instructions, to allow better workability and thinset transfer to the überMAT fleece.