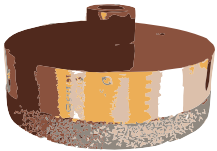




Porcelain Drill Bit - Drill Shank

For drilling clean and quick holes in porcelain, ceramic or stone. 3/8" drill mount.

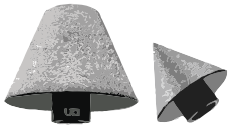
Part Number	Code	Size (")	Size (mm)
305-02911-1	PTB05	3/16"	5mm
305-02912-1	PTB06	1/4"	6mm
305-02913-1	PTB08	5/16"	8mm
305-02914-1	PTB10	3/8"	10mm
305-02917-1	PTB12	1/2"	12mm



Porcelain Drill Bit - Angle Grinder Mount

For drilling clean and quick holes in porcelain, ceramic or stone. 5/8" threaded grinder mount.

Part Number	Code	Size (")	Size (mm)
305-02919-1	PTB16	5/8"	16mm
305-02920-3	PTB20	3/4"	20mm
305-02921-4	PTB27	1-1/16"	27mm
305-02922-5	PTB30	1-3/16"	30mm
305-02923-6	PTB35	1-3/8"	35mm
305-02924-7	PTB38	1-1/2"	38mm
305-02925-8	PTB40	1-5/8"	40mm
305-02926-9	PTB45	1-3/4"	45mm
305-02927-0	PTB50	2"	50mm
305-02928-1	PTB57	2-1/4"	57mm
305-02929-2	PTB64	2-1/2"	64mm
305-02930-5	PTB70	2-3/4"	70mm
305-02931-7	PTB76	3"	76mm
305-02932-9	PTB89	3-1/2"	89mm
305-02915-1	PTB102	4"	102mm
305-02916-1	PTB115	4-1/2"	115mm
305-02918-1	PTB127	5"	127mm
305-33741-6	PTB140	5-1/2"	140mm



Porcelain Taper Bit - Angle Grinder Mount

These bits make it possible to ream out holes or shapes in porcelain, ceramic and stone.

Part Number	Code	Size (")	Size (mm)
305-42033-6	PRB238T	1/8" to 1-1/2"	0 to 38mm
305-43019-9	PTB3575	1-3/8" to 3"	35 to 75mm



Drill to Grinder Mount Adaptor

Allows for using 3/8" drill with 5/8" threaded grinder mount bits.

Part Number	Code	Type
305-02933-1	PTBADP	Adaptor